

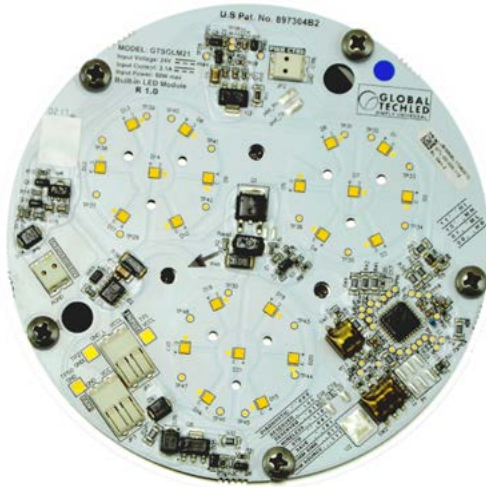


# GLOBAL TECHLED

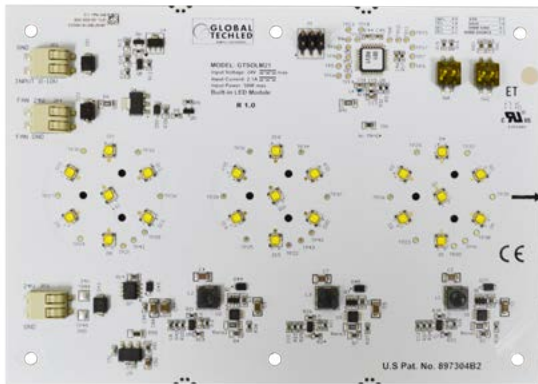
Simply Universal

The World Leader in LED Retrofits

## Solstice M21 - G2 [25W-55W LED Retrofit Kit]



GTSOLM21 - G2  
Solstice M21 - G2 LED Module



### Accessories

Catalog #	Description
IP67	IP67 Rated LED Engine
GT-LSP-120	Surge Protector. 120 V 10 kA Parallel. 20kA maximum discharge current.
GT-LSP-240	Surge Protector. 240 V 10 kA Parallel. 20kA maximum discharge current.
GT-LSP-277	Surge Protector. 277 V 10 kA Parallel. 20kA maximum discharge current.
GT-LSP-347	Surge Protector. 347 V 10 kA Parallel. 20kA maximum discharge current.
GT-LSP-480	Surge Protector. 480 V 10 kA Parallel. 20kA maximum discharge current.

### Typical Module Wattage Settings:

Rated Watts [W]	Rated Lumens [Lm]	Efficacy [Lm/W]
55	6000	110
45	5000	115
35	4000	120
25	3000	120

### Description and Application:

The Solstice modules are designed to replace inefficient and out dated HID lights. Our retrofit kits make it possible to install the solstice into almost any existing fixture. We offer a wide variety of accessory options and built in smart features, giving you unrivaled flexibility.

### Key Features:

- Life Sync
  - Module Temp Protection
  - Lumen Depreciation Maintenance
- Active Vortex Thermal Management
- Made in USA
- Standard
- 5-6-1
- 0-10VDC Dimming
  - If dimming is desired please specify when ordering

### Driver:

- 120-277VAC
- or-
- 347-480VAC

### Warranty:

- Warranty: Driver = 5 years
- Solstice Light Engine = 10 years

### Technical:

- Operating Temperature Range:
  - 40°C to 55°C Nominal
- L70 > 150,000Hrs.
- Life Sync adjusts module to operate at max performance in any given environment
- Photometric: .ies files available
- Surge Protector: Required for ALL 347V-480V applications in order to qualify for Warranty
- Recommended for all outdoor applications



### Optical Distributions:



### Color Temperature Options:



