

GLOBAL TECH LED RETROFIT KIT INSTALLATION GUIDE – GTR-MG-series-PLGT

The GTR-AR-series-PLGT Retrofit Kit is designed to be installed into a Holophane Mongoose G20HP27LWFVZ Pole/Street Luminaire with the construction as shown in the figures below.

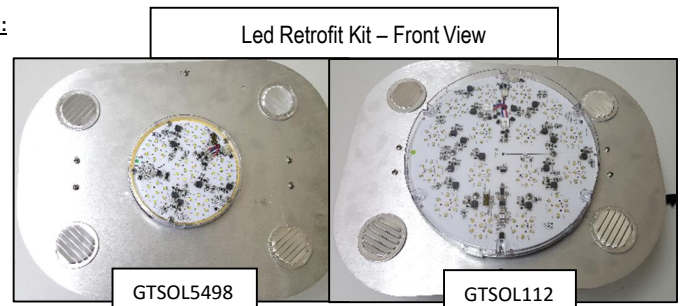


IMPORTANT - READ ALL INSTRUCTIONS BEFORE ATTEMPTING INSTALLATION

- ◆ WARNING – Risk of fire or electric shock. LED retrofit kit installation requires knowledge of HID lighting luminaires electrical systems. If not qualified, do not attempt installation. Contact a qualified electrician.
- ◆ WARNING - Risk of fire or electric shock. Luminaire wiring and electrical parts may be damaged when drilling for installation of LED retrofit kit. Check for enclosed wiring and components.
- ◆ WARNING - Risk of fire or electric shock. Install this retrofit kit only in luminaires indicated in the installation instructions that have the construction features, dimensions and model number shown in the photographs and/or drawings and where the input rating of the retrofit kit does not exceed the input rating of the luminaire.
- ◆ Only those open holes indicated in the photographs and/or drawings may be made or altered as a result of kit installation. Do not leave any other open holes in an enclosure of wiring or electrical components.
- ◆ Do not make or alter any open holes in an enclosure of wiring or electrical components during kit installation.
- ◆ WARNING –To prevent wiring damage or abrasion, do not expose wiring to edges of sheet metal or other sharp objects.
- ◆ “This luminaire has been modified and can no longer operate the HID lamp” shall be marked on the retrofit luminaire where readily visible by the user during normal maintenance.
- ◆ Failure to install this product in accordance with the National Electric Code (NEC), or the Canadian Electrical Code (CSA 22.1), all applicable Federal, State and local electric codes as well as the specific Underwriters Laboratories (UL) safety standards for the installation, location and application may cause unsafe situations leading to serious personal injury, death, property damage and/or product malfunction.
- ◆ To avoid electric shock or component damage disconnect power before attempting installation or servicing.
- ◆ Avoid looking directly into the light beam with unprotected eyes as the intensity of the beam may damage the eyes.
- ◆ LED Retrofit Kit has been properly packaged to protect it during transit. Unpack, inspect and notify shipping agent and instructor if any damage is found.
- ◆ Save these instructions after installation of the LED retrofit kit.

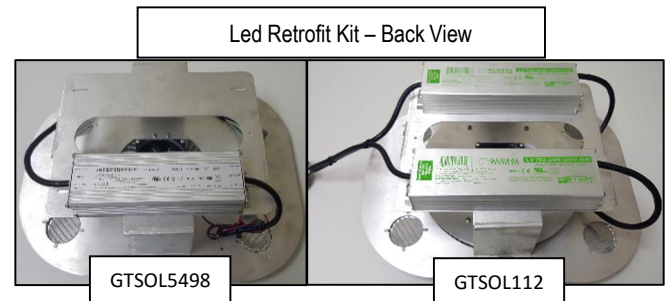
GTR-AR-5498-series-PLGT Retrofit Kit Product Description (This kit comes pre-assembled):

- 1 each- LED engine model # GTSOL5498-G2
- 1 each- LED Driver
- 1 each- aluminum mounting plate model # GTR-MG-1X5498
- 1 each- Installation sticker to place in luminaire. Required after rewiring of luminaire.
- 3 each- L-Bracket with wire ties
- WAGO 222-413 connectors (Figure 4)



GTR-AR-112-series-PLGT Retrofit Kit Product Description (This kit comes pre-assembled):

- 1 each- LED engine model # GTSOL112
- 1 or 2 each- LED Drivers
- 1 each- Universal mounting plate model # GTR-MG-1X112
- 1 each- Installation sticker to place in luminaire. Required after rewiring of luminaire.
- 3 each- L-Bracket with wire ties
- WAGO 222-413 connectors (Figure 4)



Required tools and hardware:

- Flat and Philips Head Screwdriver
- Wire Stripper/Cutter

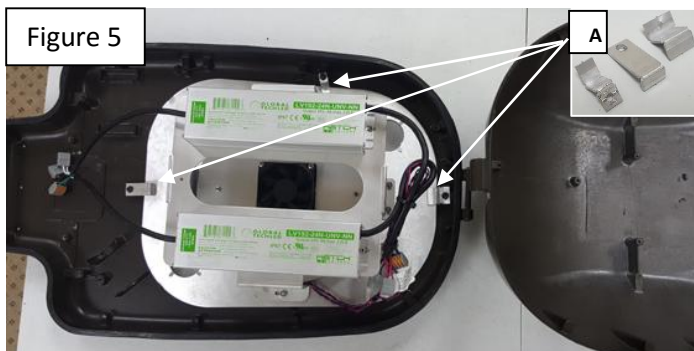
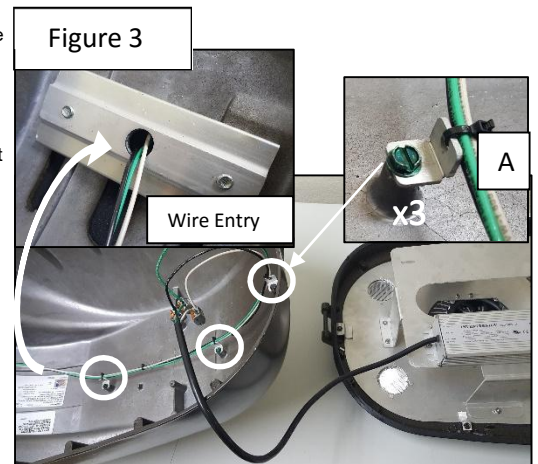
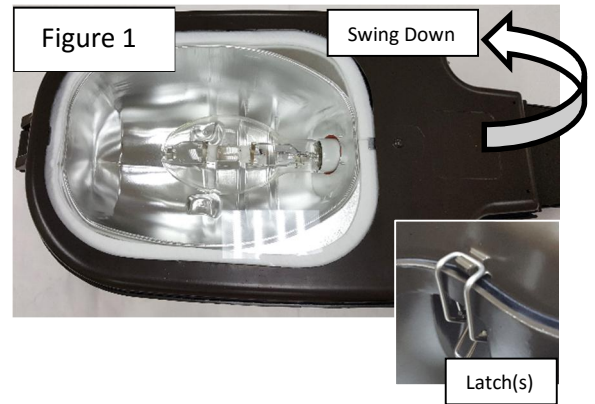
GLOBAL TECH LED RETROFIT KIT INSTALLATION GUIDE – GTR-MG-series-PLGT

The GTR-AR-series-PLGT Retrofit Kit is designed to be installed into a Holophane Mongoose G20HP27LWFVZ Pole/Street Luminaire with the construction as shown in the figures below.

INSTALLATION INSTRUCTIONS

Note: This retrofit kit is only to be installed in a Mongoose luminaires that are mounted with a minimum of 12 ft. above the ground plane.

1. Disconnect power from the supply source prior to the start of installation.
NOTE: To reduce the risk of shock, follow proper lock-out tag-out procedures per local code.
2. Open rear latches which secures cover to main housing. Open housing by swinging the lower part or door down and away from latch area **Figure 1**.
3. Remove glass panel, HID lamp, reflector, socket, wire leads and ballast. Save all screws as they will be used again. After removal of all components, fixture will appear as shown in **Figure 2**. The HID lamp is classified as hazardous waste as it contains a small amount of mercury and lead. The lamps must be disposed of in accordance with the Universal Waste Rule published by the EPA on July 6, 1999. Check with state and local authorities for proper disposal. Global Tech LED recommends recycling of spent HID fixtures and components
4. This LED Retrofit kit shown on page 1 is pre-wired. It consists of an LED driver, LED engine, fan and an aluminum mounting plate designed specifically for this fixture. Check the input voltage of the fixture to ensure that the voltage matches the Driver(s) supplied with the LED retrofit kit prior to moving to the next steps. The information is clearly marked on the Driver(s), if it does not match, stop installation and contact Global Tech LED.
5. Attach the mounted LED retrofit kit to the same location where the glass panel was removed using the existing screws and supplied kit brackets **Figure 5A**. Thread the black, white and ground wires out through the wire entry point in the back of the fixture **See Figure 3**. Attach the three wires at three locations along the back of the upper fixture with the supplied L-Brackets and wire ties.
6. Wago 222-413 connectors are included with the installation kit. (connectors are the same principle as a standard wire nut) Simply strip the wire/conductors 12mm, lift the orange lever 90°, push the conductor into the connector and press orange lever down locking the wire into the connection **Figure 4**
7. Connect the White (NEUTRAL) input power wire from the supply source with a white wire of the driver using the included Wago connector. Connect the Black (HOT) input power wire to the supply source with a black wire of the driver using the included Wago connector. Connect the Green (GROUND) wire to the supply source ground wire using the included Wago connector. The grounding of the luminaire housing shall be maintained.
8. Close the cover and securely clamp latches in place **Figure 4**.
9. Turn on the power to the fixture and verify that the light is illuminated. Do not look directly at the LED light without proper eye protection.

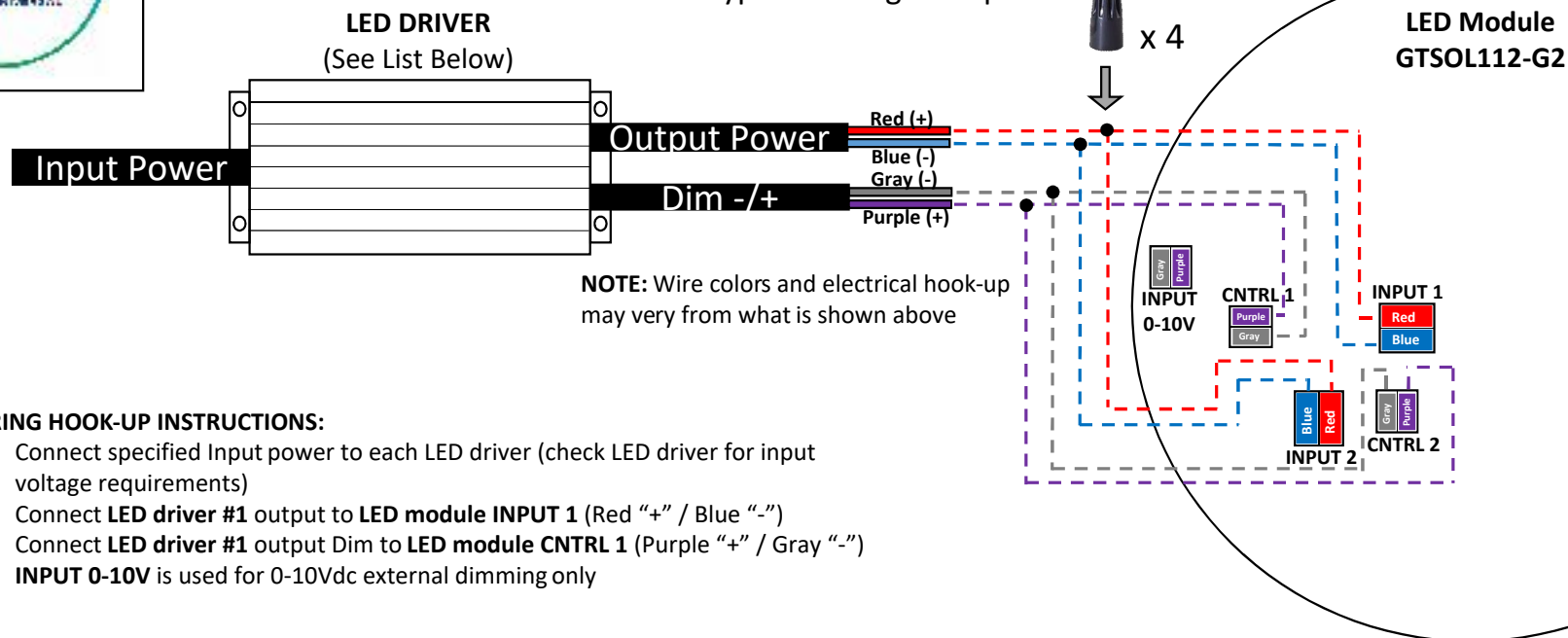




Global Tech LED

GTR-MG-112-G2-1X

Typical Wiring Example



WIRING HOOK-UP INSTRUCTIONS:

- Connect specified Input power to each LED driver (check LED driver for input voltage requirements)
- Connect **LED driver #1** output to **LED module INPUT 1** (Red “+” / Blue “-”)
- Connect **LED driver #1** output Dim to **LED module CNTRL 1** (Purple “+” / Gray “-”)
- **INPUT 0-10V** is used for 0-10Vdc external dimming only

APPROVED DRIVER LIST:

- (1x) 320W Mean Well (120-277V) **HLG-320H-C3500B**; ML, MH
- (1x) 320W Mean Well (277-480V) **HVGC-320-3500B**; ML, MH
- (1x) 200W Inventronics (120-277V) **EUG-200S210DT**; LO, ML
- (1x) 200W Inventronics (120-277V) **EUD-200S210DT**; LO, ML
- (1x) 150W Inventronics (120-277V) **EUG-150S210DT**; LO
- (1x) 150W Inventronics (277-480V) **ESD-150S210DT**; LO

NOTE: THE GTR-MG-112-G2 (1X) retrofit kit comes pre-wired

