

This model # GTR-HB- series PLAT LED retrofit kit is designed to be installed in High Bays with metal Reflectors as shown in the figures with minimum dimensions of 423mm /16.65 in. diameter, 395 mm / 15.5 in. height



SIMPLY UNIVERSAL



IMPORTANT - READ ALL INSTRUCTIONS BEFORE ATTEMPTING INSTALLATION

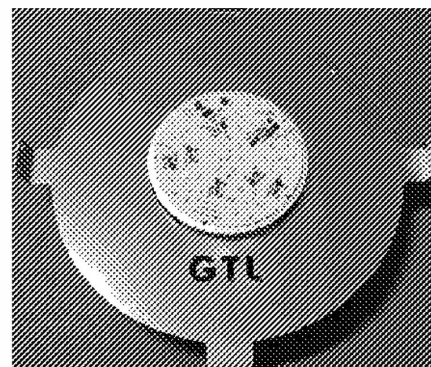
- ◆ **WARNING**– Risk of fire or electric shock. Luminaire wiring, LED driver or other electrical parts may be damaged when drilling for installation of the retrofit kit. Check for enclosed wiring or electric components.
- ◆ **WARNING**– Risk of fire or electric shock. LED retrofit kit installation requires knowledge of HID lighting luminaires electrical systems. If not qualified, do not attempt installation. Contact a qualified electrician.
- ◆ **WARNING** - Risk of fire or electric shock. Install this retrofit kit only in luminaires indicated in the installation instructions that have the construction features, dimensions shown in the photographs and/or drawings.
- ◆ Only those open holes indicated in the photographs and/or drawings may be made or altered as a result of kit installation. Do not leave any other open holes in an enclosure of wiring or electrical components.
- ◆ **WARNING** –To prevent wiring damage or abrasion, do not expose wiring to edges of sheet metal or other sharp objects.
- ◆ "This luminaire has been modified and can no longer operate the originally intended lamp" shall be marked on the retrofit luminaire where readily visible by the user during normal maintenance during re-lamping.
- ◆ Failure to install this product in accordance with the National Electric Code (NEC), or the Canadian Electrical Code (CSA 22.1), all applicable Federal, State and local electric codes as well as the specific Underwriters Laboratories (UL) safety standards for the installation, location and application may cause unsafe situations leading to serious personal injury, death, property damage and/or product malfunction.
- ◆ To avoid electric shock or component damage disconnect power before attempting installation or servicing.
- ◆ Avoid looking directly into the light beam with unprotected eyes as the intensity of the beam may damage the eyes.
- ◆ LED Retrofit Kit has been properly packaged to protect it during transit. Unpack, inspect and notify shipping agent and instructor if any damage is found.
- ◆ Save these instructions after installation of the LED retrofit kit.

GTR-HB series (PLAT) Retrofit Kit Product Description
(This kit comes pre-assembled):

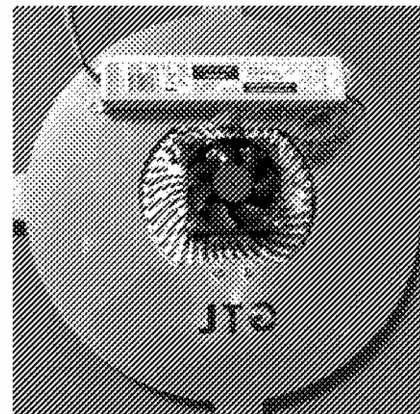
- 1 each - LED module model # GTSOL5498 or (60w LED module GTSOLM21)
- 1 each – 100w LED driver model # LED-INTA-0024V-41-F-O, or T11UNV024-100-LE, or LV100-24N-UNV-1, or 60w LED driver LV60-24N-UNV-F
- 1 each - aluminum mounting plate model # GTP-HB11AR16-1X
- 5 each – WAGO 222-413 connectors.
- 1 each –Installation Sticker to place in luminaire. Required after rewiring of luminaire.

Required tools and hardware:

- Flat and Philips Head Screwdriver
- Tape Measure
- Permanent Marker
- Cordless Drill
- Drill Bit - 11/64"
- Wire Stripper/Cutter
- Wire connectors
- Safety glasses



LED Retrofit Kit for High Bay -Front View



LED Retrofit Kit for High Bay – Back View

GLOBAL TECH LED RETROFIT KIT INSTALLATION GUIDE – HIGH BAY

This model # GTR-HB- series PLAT LED retrofit kit is designed to be installed in High Bays with metal Reflectors as shown in the figures with minimum dimensions of 423mm /16.65 in. diameter, 395 mm / 15.5 in. height



INSTALLATION INSTRUCTIONS

Nota* This retrofit kit is only to be installed in luminaires with a metal reflector.

Do not install in any other type of reflector material. This retrofit kit is to be installed in luminaires that are mounted with a minimum of 12 ft. above the ground plane.

1. Disconnect power prior to installation. Unhook fixture and place on a flat surface. See Figure 1
2. Remove Clamp Ring and Diffuser from bottom of fixture. This must be provided with luminaire to prevent risk of shock.
3. Remove lamp, reflector, socket, wire leads and Ballast. The HID lamp is classified as hazardous waste as it contains a small amount of mercury and lead. The lamps must be disposed of in accordance with the Universal Waste Rule published by the EPA on July 6, 1999. Check with state and local authorities for proper disposal. Global Tech LED recommends recycling of all spent HID fixtures and components.
4. This LED Retrofit kit is pre-wired. It consists of a 100w driver, a 96 watt LED engine, fan and an aluminum mounting plate. Double Check the input voltage to ensure that the power matches the Driver supplied with the LED retrofit kit prior to next steps. This information is clearly marked on the Driver. If it does not match, stop installation and contact Global Tech LED immediately. Route the driver and ground lead to the ballast compartment (ballast pod) and to make the connections to branch inside that compartment. Note* The integral driver leads are long enough to extend into the ballast pod such that there are not splices in the leads. (5) Wago 222-413 connectors are included with the installation kit. (connectors are the same principle as a standard wire nut) Simply strip the conductors 12mm, lift the orange lever 90°, push the conductor into the connector and press orange lever down locking the wire into the connection. See Figure 3
5. Connect the White (NEUTRAL) input power wire to the house power with a white wire using a wire connector as shown in Figure 5.
6. Connect the Black (HOT) input power wire to the house power with a black wire using a wire connector as shown in Figure 5.
7. Connect the Green (GROUND) wire to the house side ground wire using a wire connector as shown in Figure 5. The grounding of the luminaire housing shall be maintained.
8. Using the retrofit plate as a guide, mark four holes at the base of the fixture, 1" from the bottom of the fixture. Drill out holes using a 11/64" drill bit. Attach the mounted LED retrofit Kit to the fixture using the screws and nuts provided. See Figures 4 & 5.
9. Remove the protective plastic lens covering the LED engine. Do not touch the individual LEDs at any time.
10. Re-install the Diffuser and secure with Clamp Ring. This must be provided with luminaire to prevent risk of shock.
11. Turn on the power to the fixture and verify that the light is illuminated. Do not look directly at the LED light without proper eye protection.

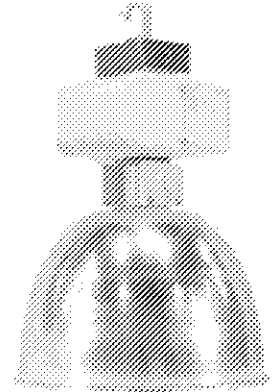


Figure 1

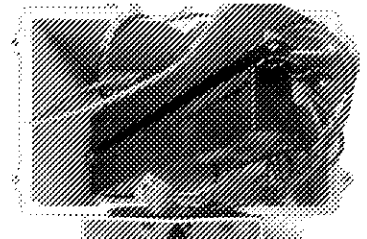


Figure 2

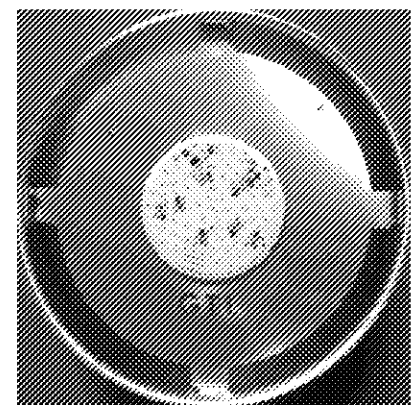
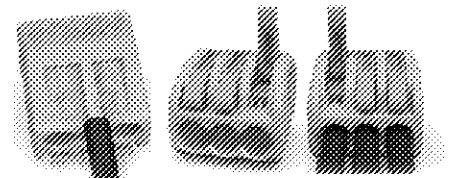


Figure 4

GLOBAL TECH LED RETROFIT KIT INSTALLATION GUIDE – HIGH BAY

This model # GTR-HB-series PLAT LED retrofit kit is designed to be installed in High Bays with metal Reflectors as shown in the figures with minimum dimensions of 423mm / 16.65 in. diameter, 395 mm / 15.5 in. height

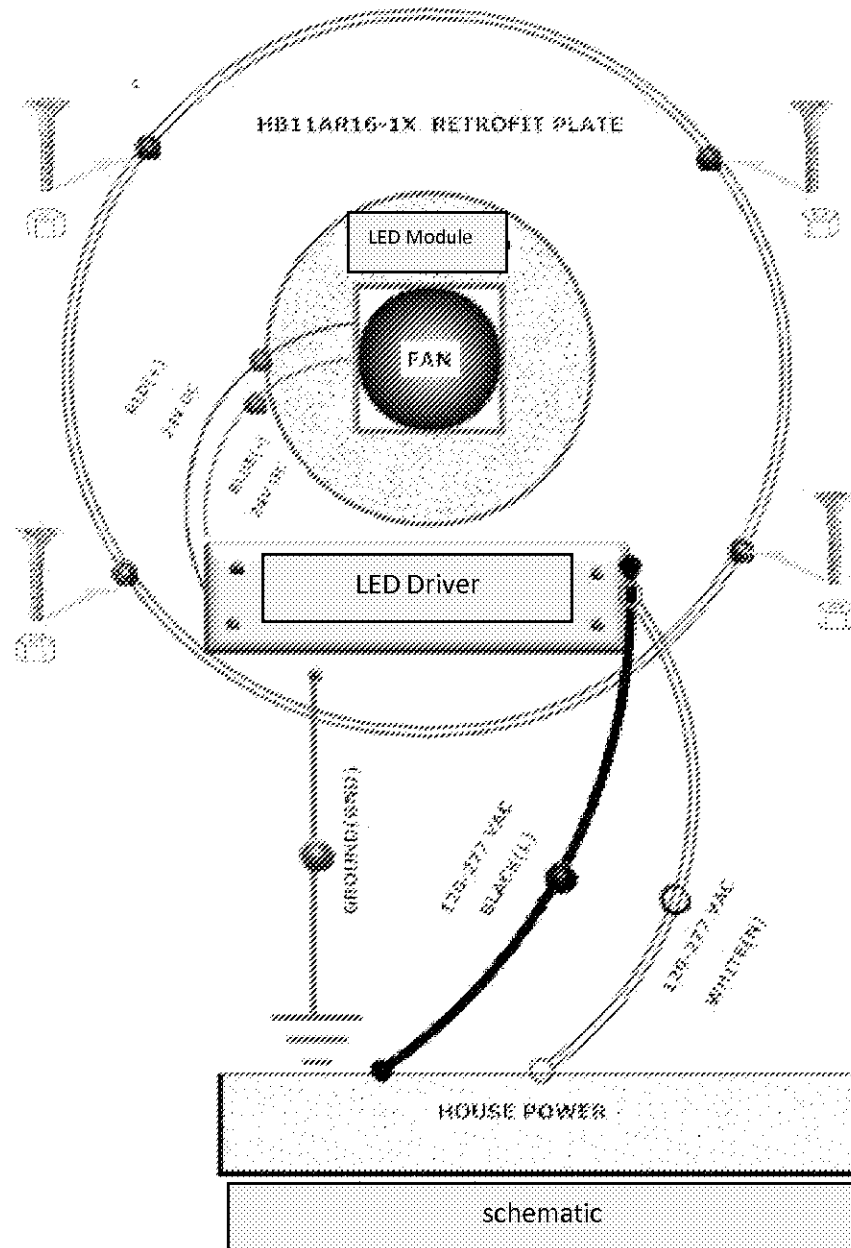


Figure 5